



July 2009

Wildlife & energy development

Pronghorn of the Upper Green River Basin - Year 4 Report - Appendix

By Jon P. Beckmann and Renee G. Seidler



Prepared for Shell Exploration & Production Company,
Questar Market Resources, and
Ultra Resources, Inc.

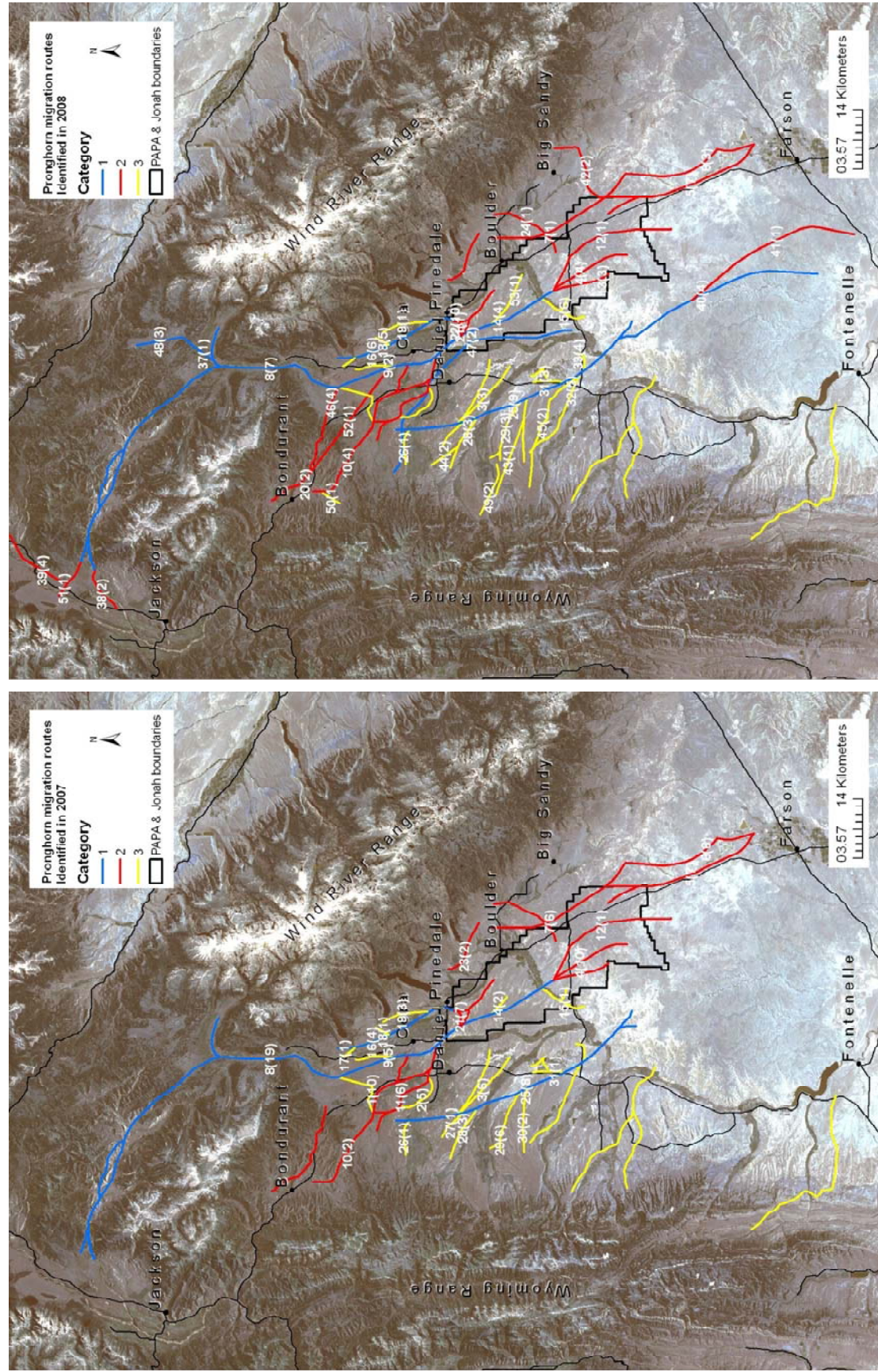


Figure 1A. Overview of pronghorn migration routes identified in the Upper Green River Basin in 2007 (left) and 2008 (right). Category 1 represents major corridors for pronghorn movement, while categories 2 and 3 are relatively less important to maintaining connectivity. The numbers in white text represent the number of pronghorn using each route, as explained in Table 1 of report.

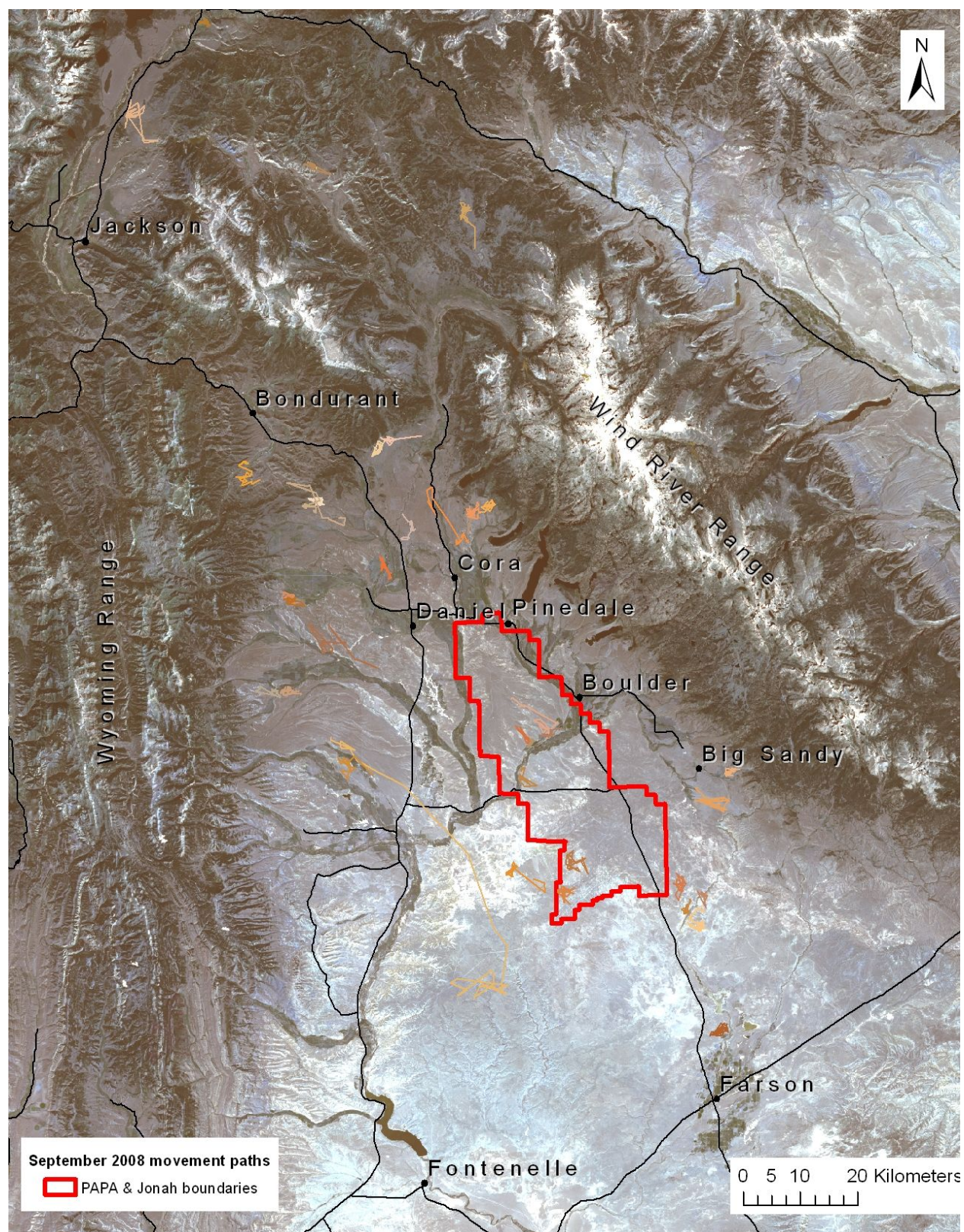


Figure 2A. Movement paths (in shades of brown) of all GPS-collared pronghorn in September 2008.

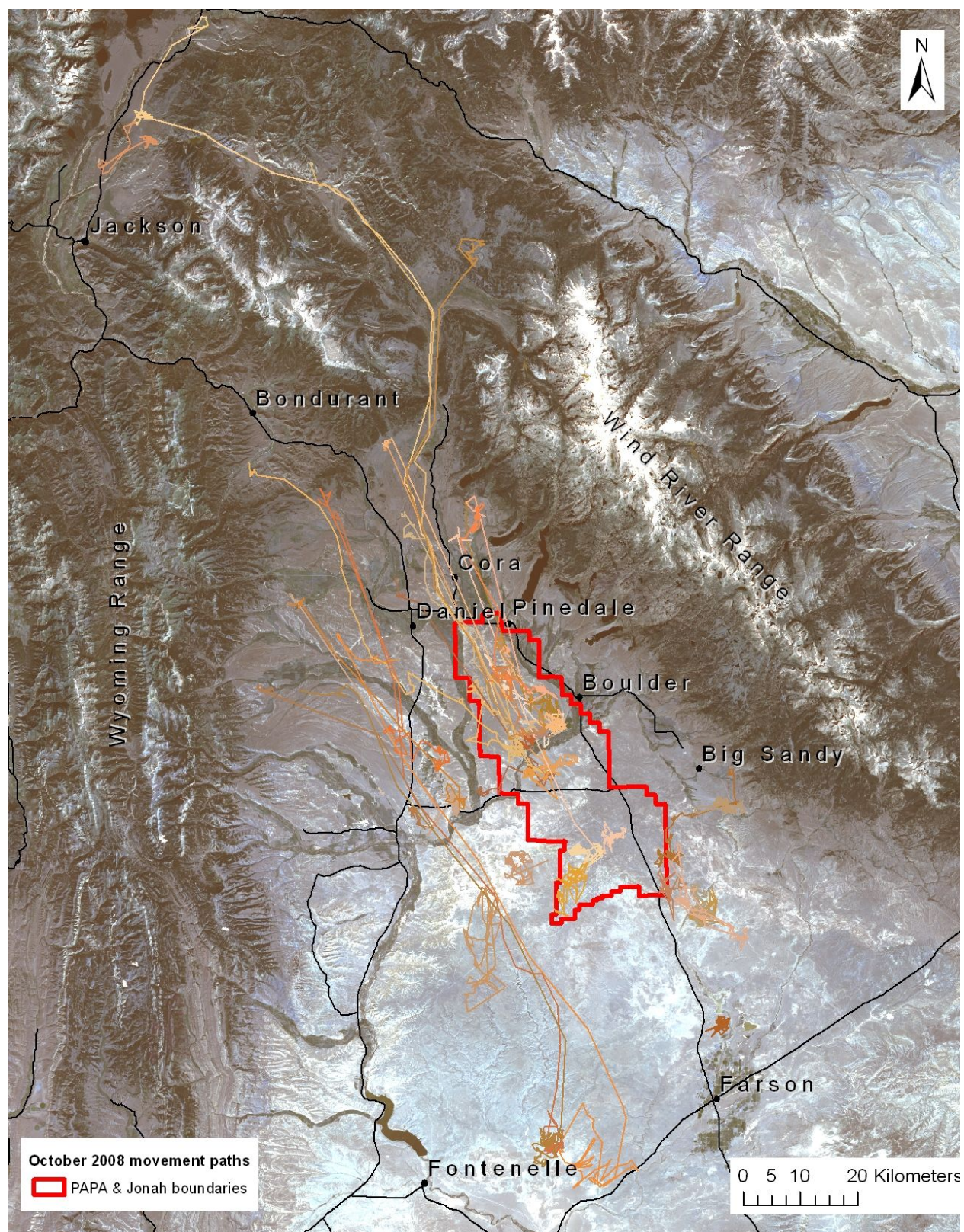


Figure 3A. Movement paths (in shades of brown) of all GPS-collared pronghorn in October 2008.

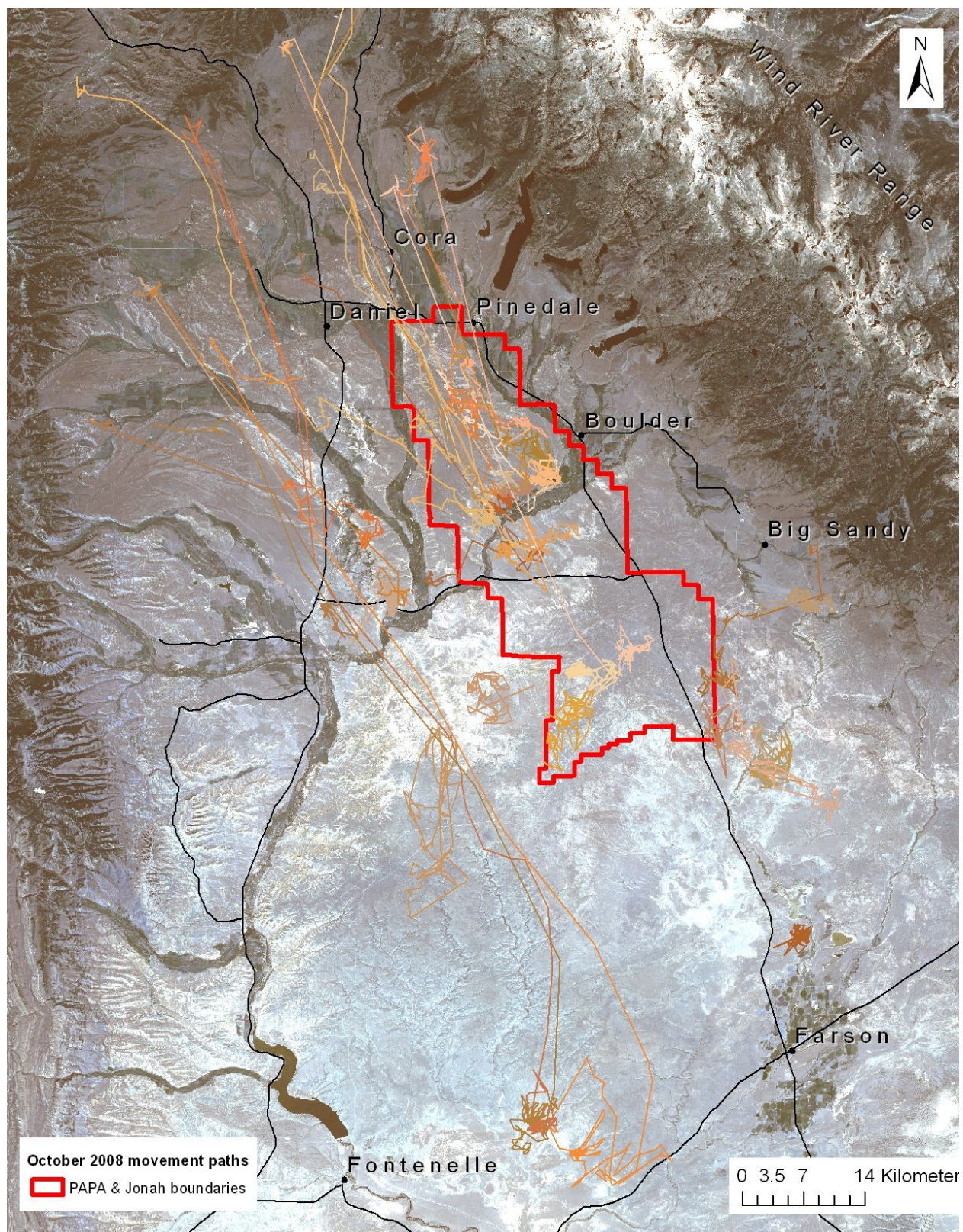


Figure 4A. Movement paths (in shades of brown) of all GPS-collared pronghorn in October 2008, highlighting area of intensive movement.

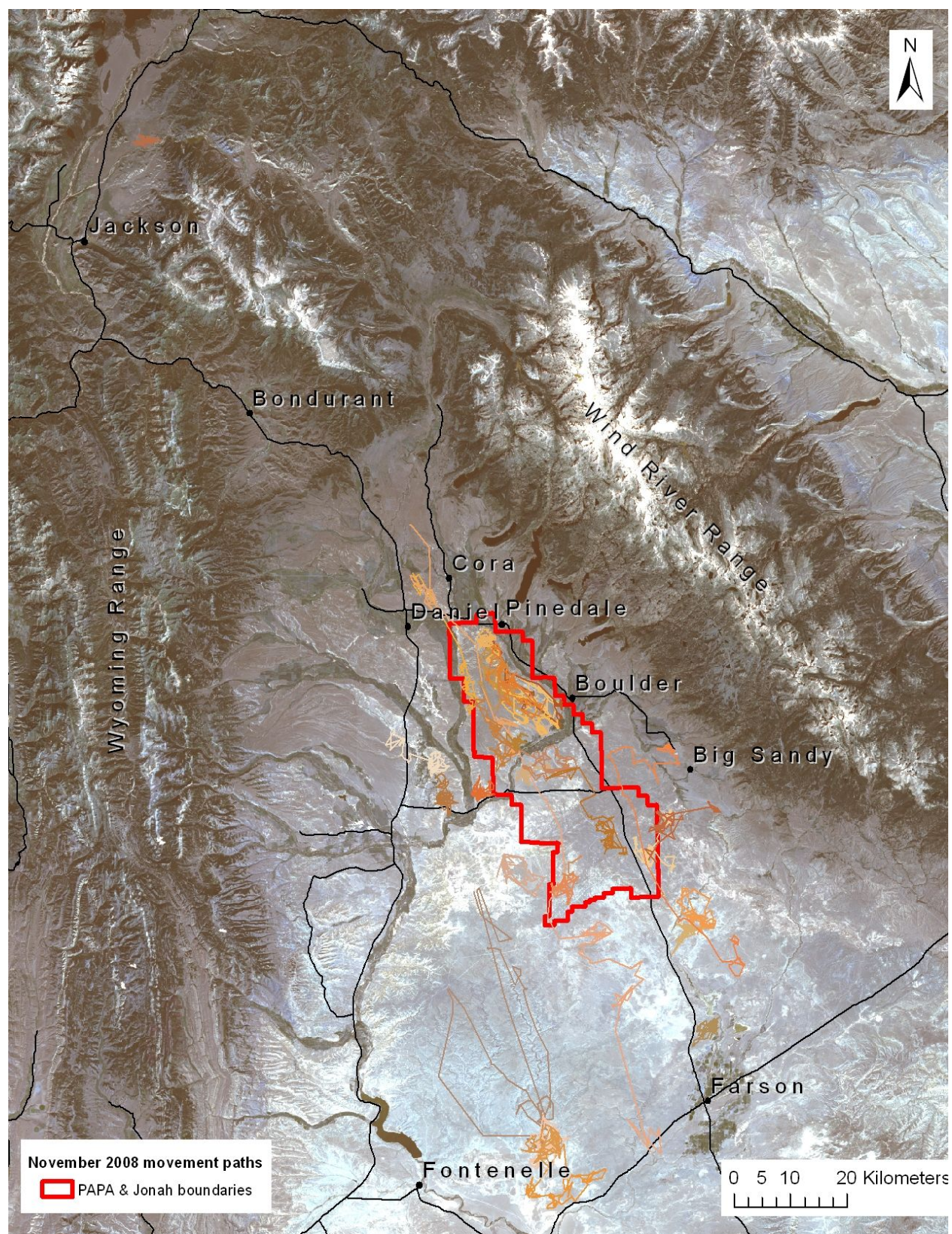


Figure 5A. Movement paths (in shades of brown) of all GPS-collared pronghorn in November 2008.

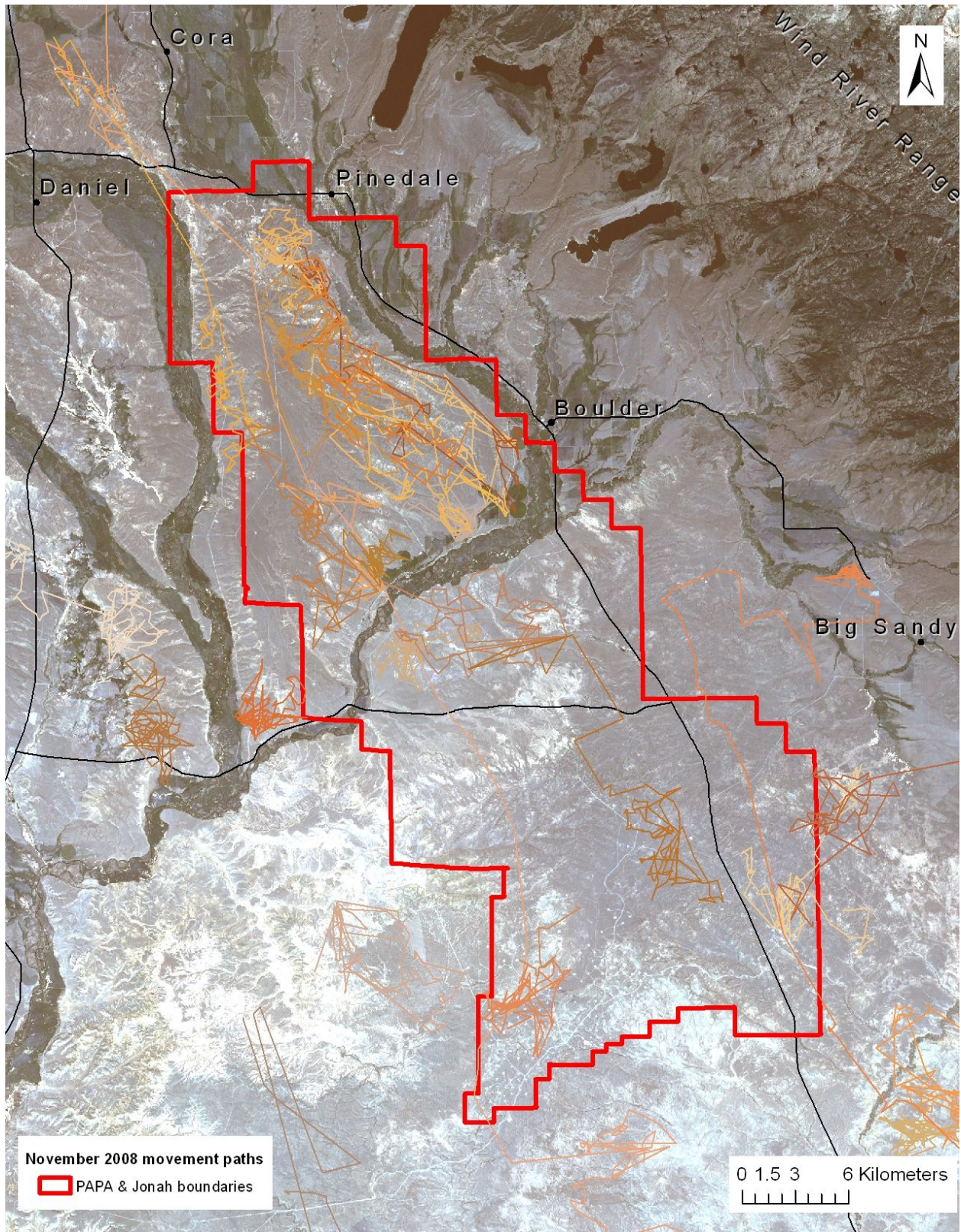


Figure 6A. Movement paths (in shades of brown) of all GPS-collared pronghorn in November 2008, highlighting area of intensive movement in and around gas fields.

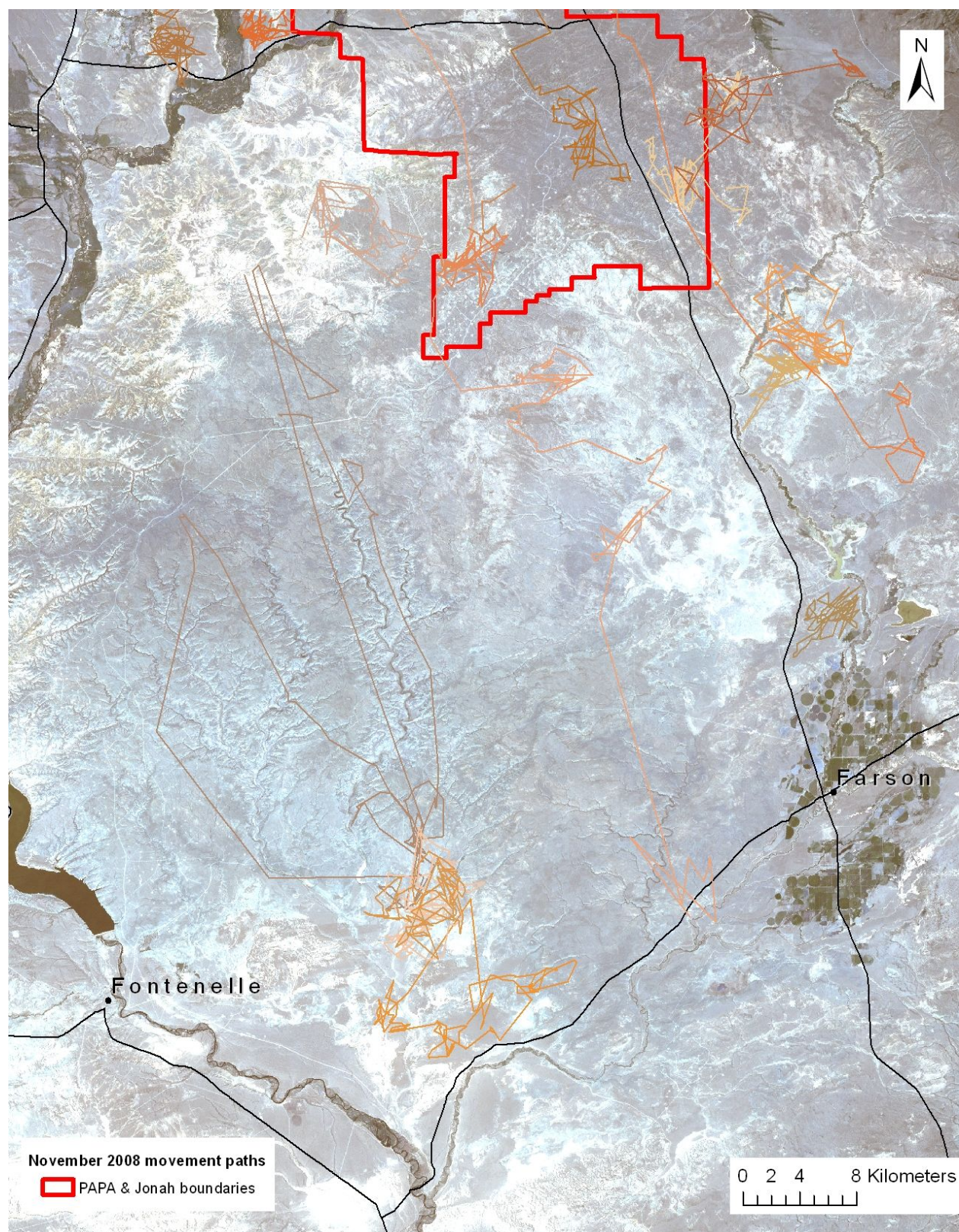


Figure 7A. Movement paths (in shades of brown) of all GPS-collared pronghorn in November 2008, highlighting area of intensive movement south of gas fields.

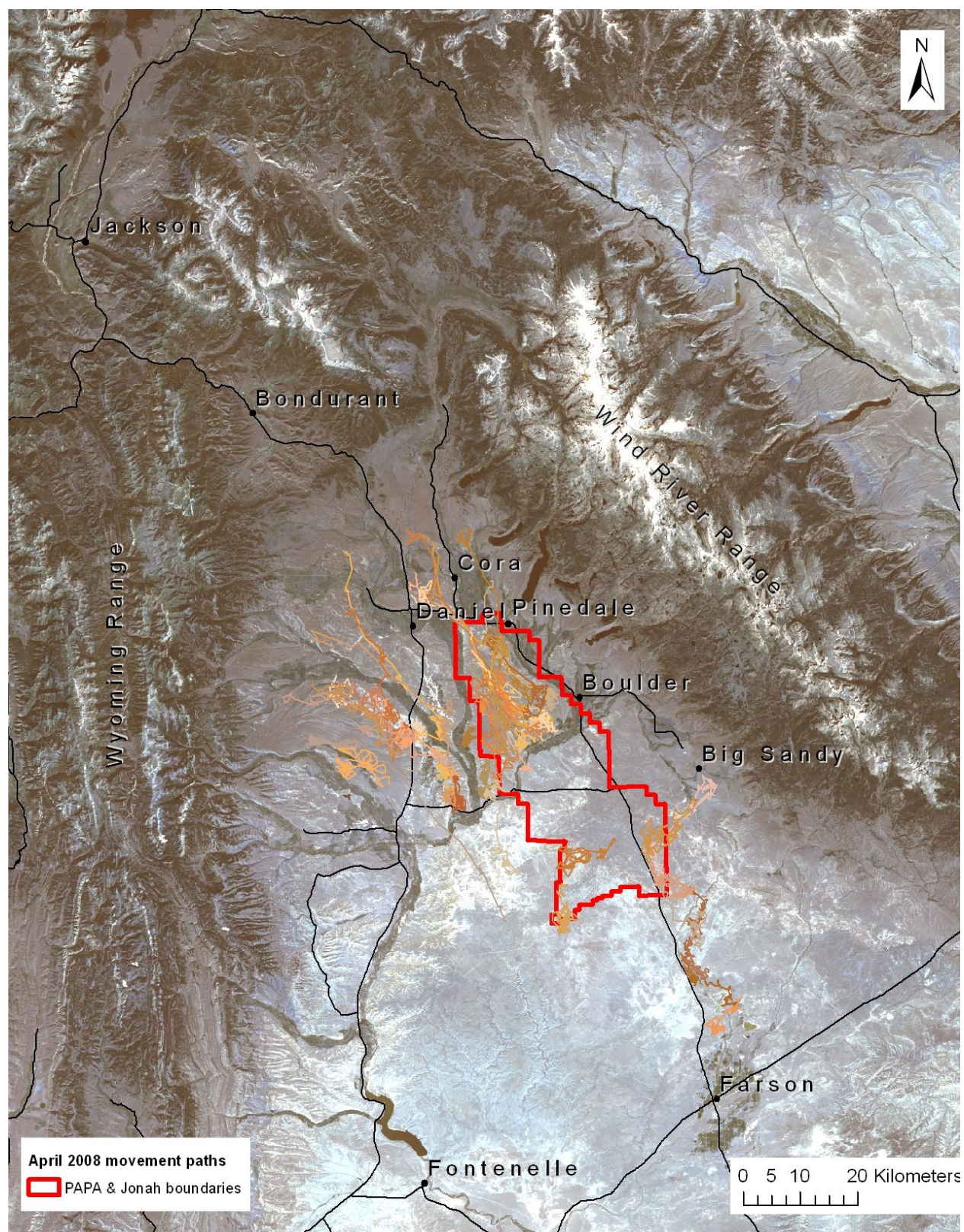


Figure 8A. Movement paths (in shades of brown) of all GPS-collared pronghorn in April 2008.

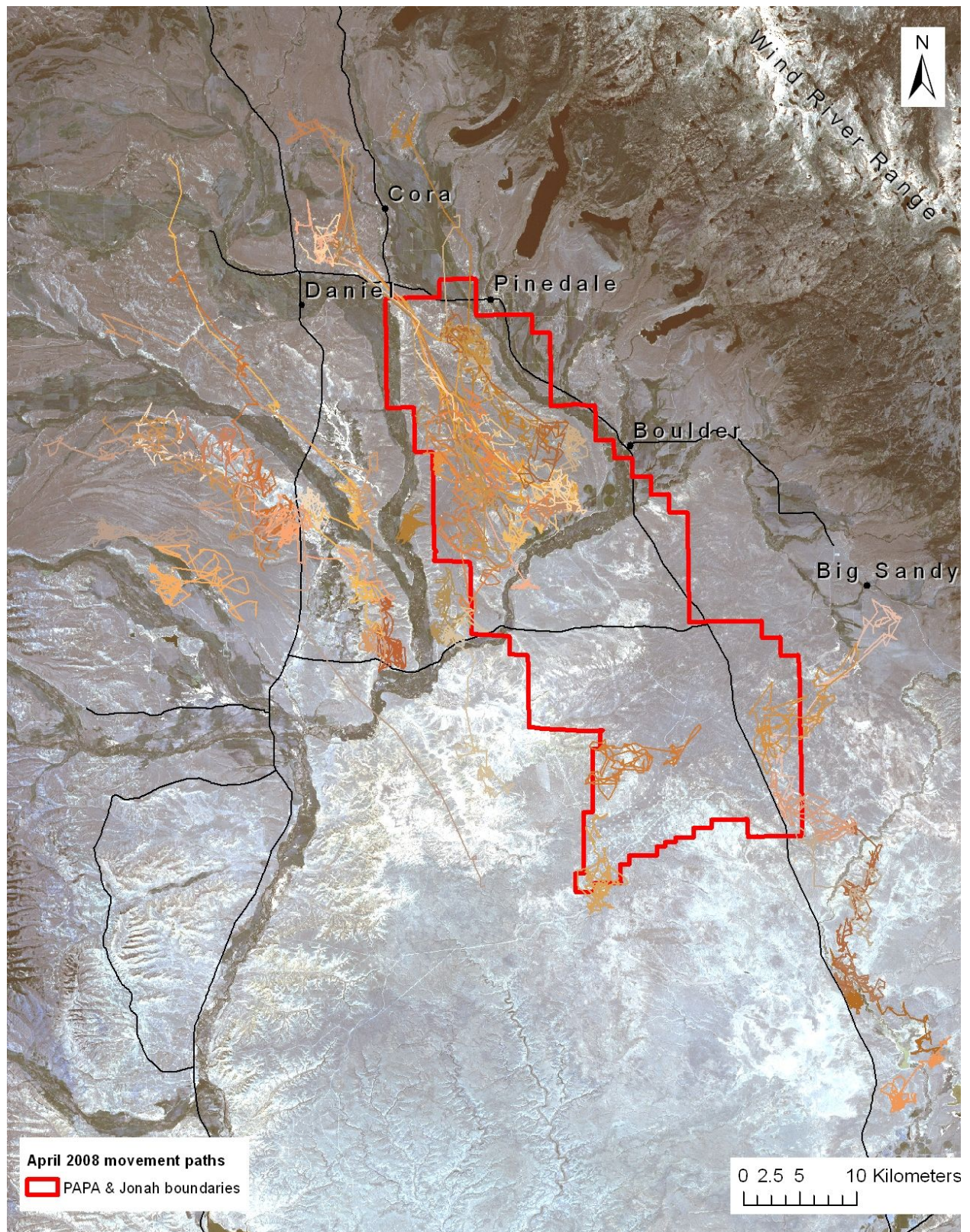


Figure 9A. Movement paths (in shades of brown) of all GPS-collared pronghorn in April 2008, highlighting areas in and near gas fields.

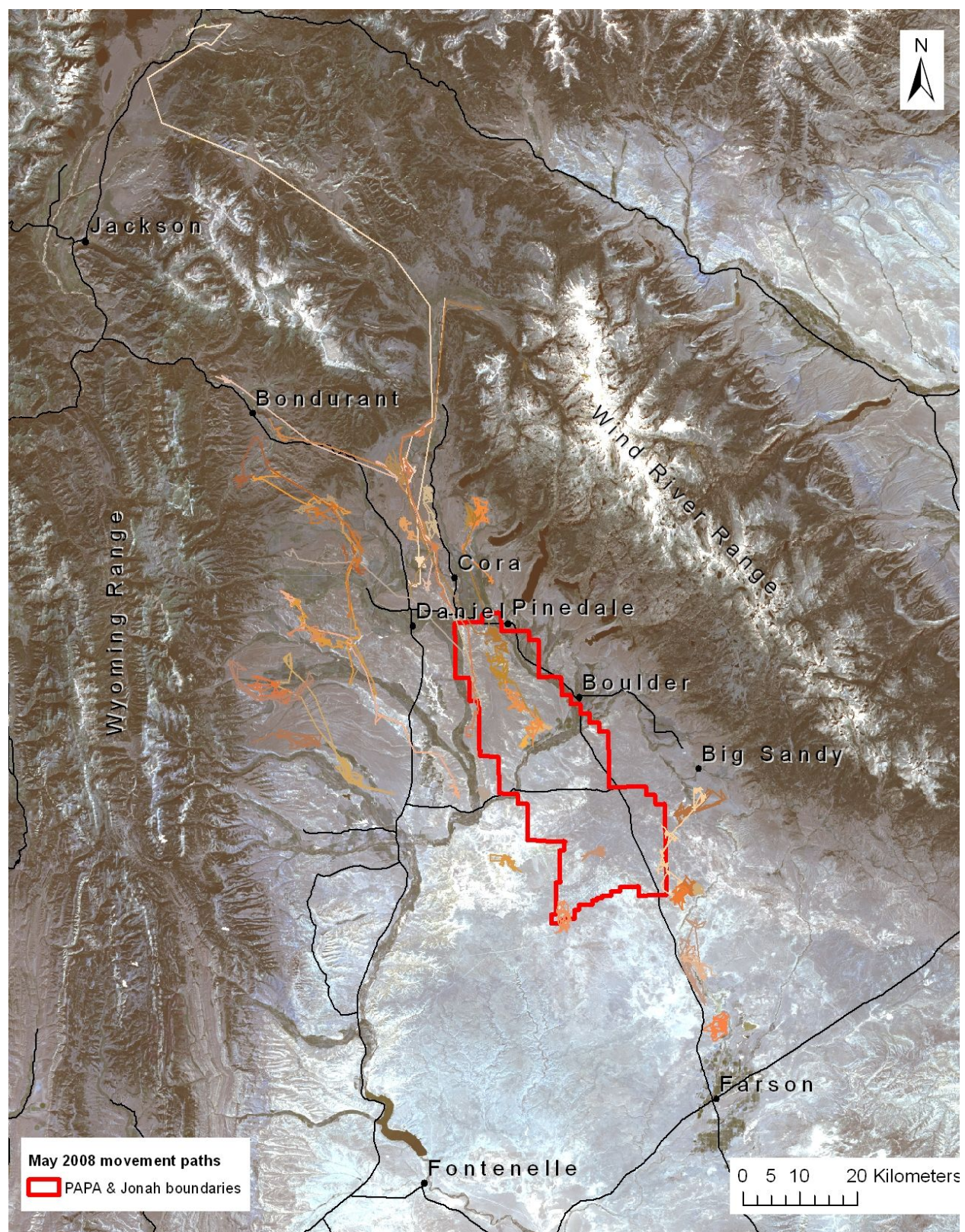


Figure 10A. Movement paths (in shades of brown) of all GPS-collared pronghorn in May 2008.

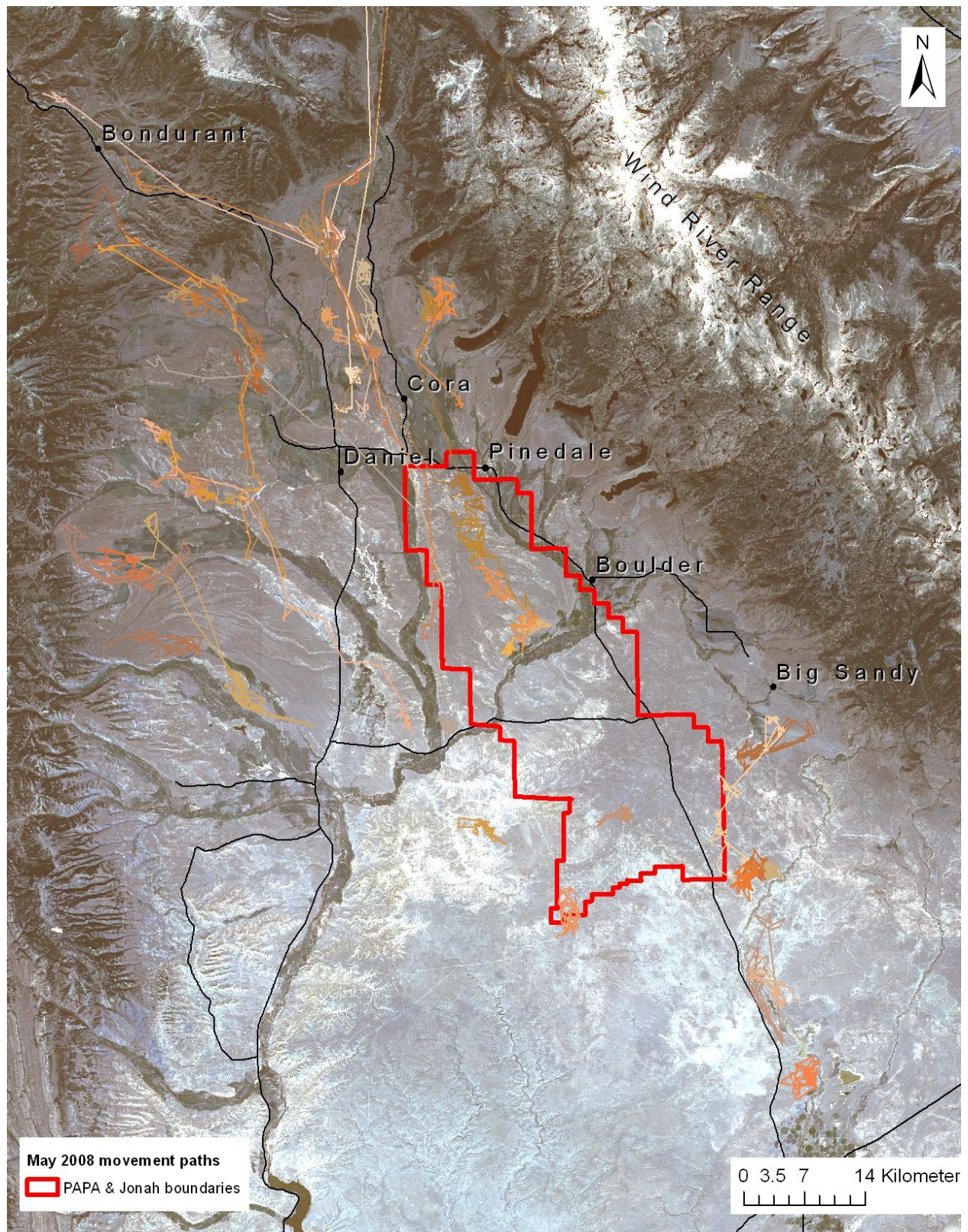


Figure 11A. Movement paths (in shades of brown) of all GPS-collared pronghorn in May 2008, highlighting use around gas fields.

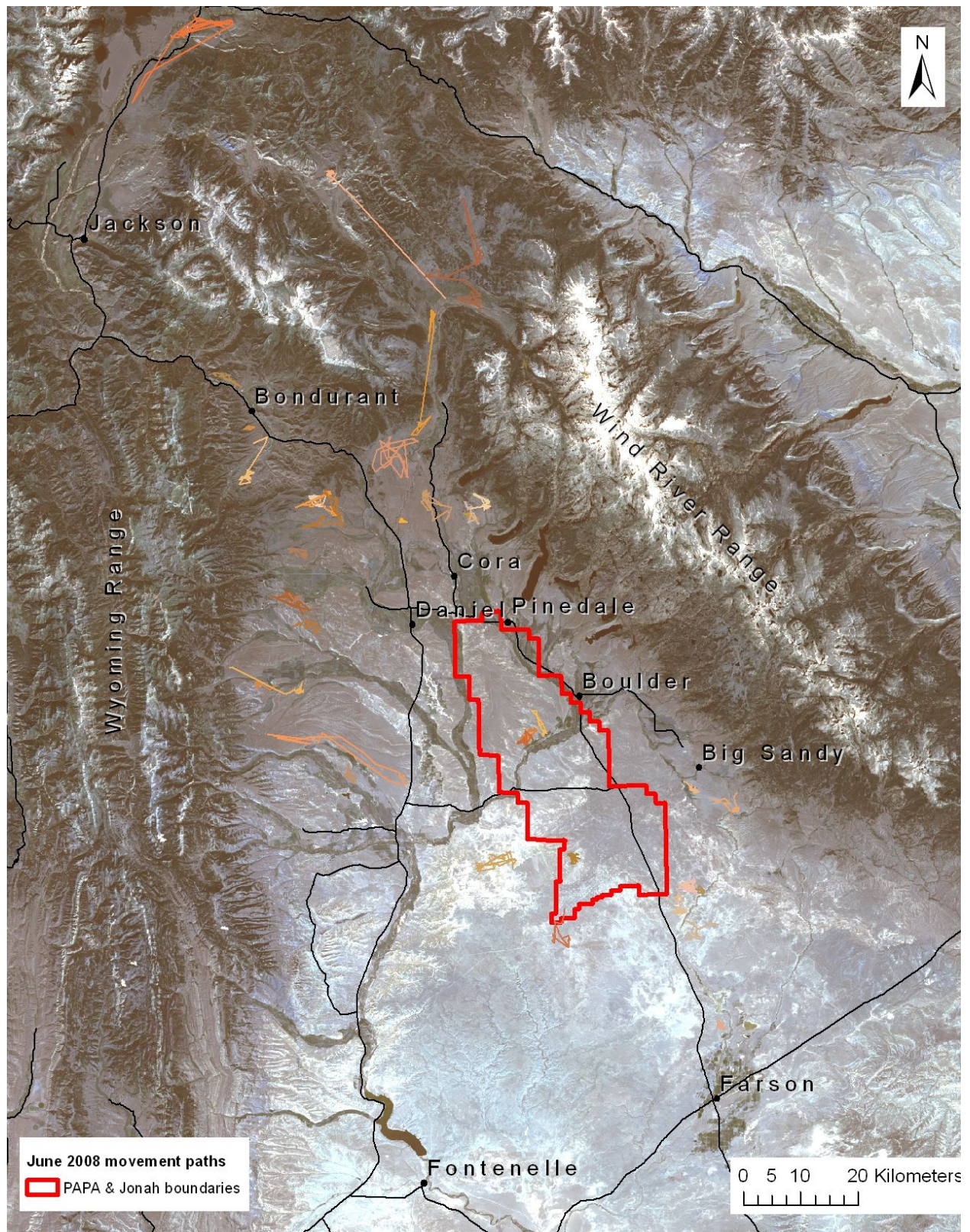


Figure 12A. Movement paths (in shades of brown) of all GPS-collared pronghorn in June 2008.

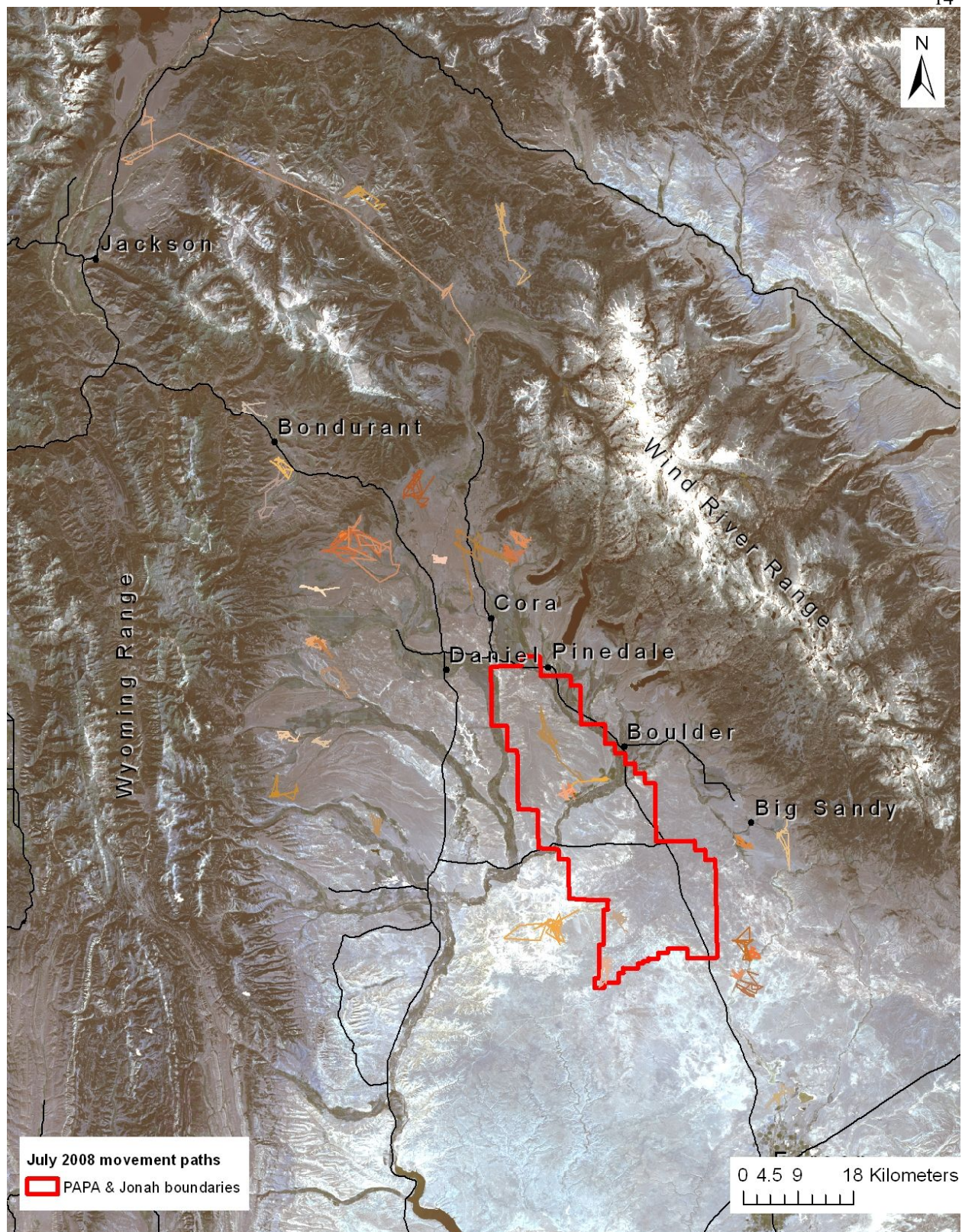


Figure 13A. Movement paths (in shades of brown) of all GPS-collared pronghorn in July 2008