

PRESENTATION GIVEN AT TRANSLinks REDD WORKSHOP

JUNE 22, 2009

BRONX, NEW YORK, USA

HOSTED BY

THE WILDLIFE CONSERVATION SOCIETY



This workshop was made possible by the generous support of the American people through the United States Agency for International Development (USAID) under the terms of the TransLinks Cooperative Agreement No.EPP-A-00-06-00014-00 to the Wildlife Conservation Society (WCS). TransLinks is a partnership of WCS, The Earth Institute, Enterprise Works/VITA, Forest Trends and the Land Tenure Center. The contents are the responsibility of the authors and do not necessarily reflect the views of USAID or the United States government.

Karukinka

WCS REDD Meeting

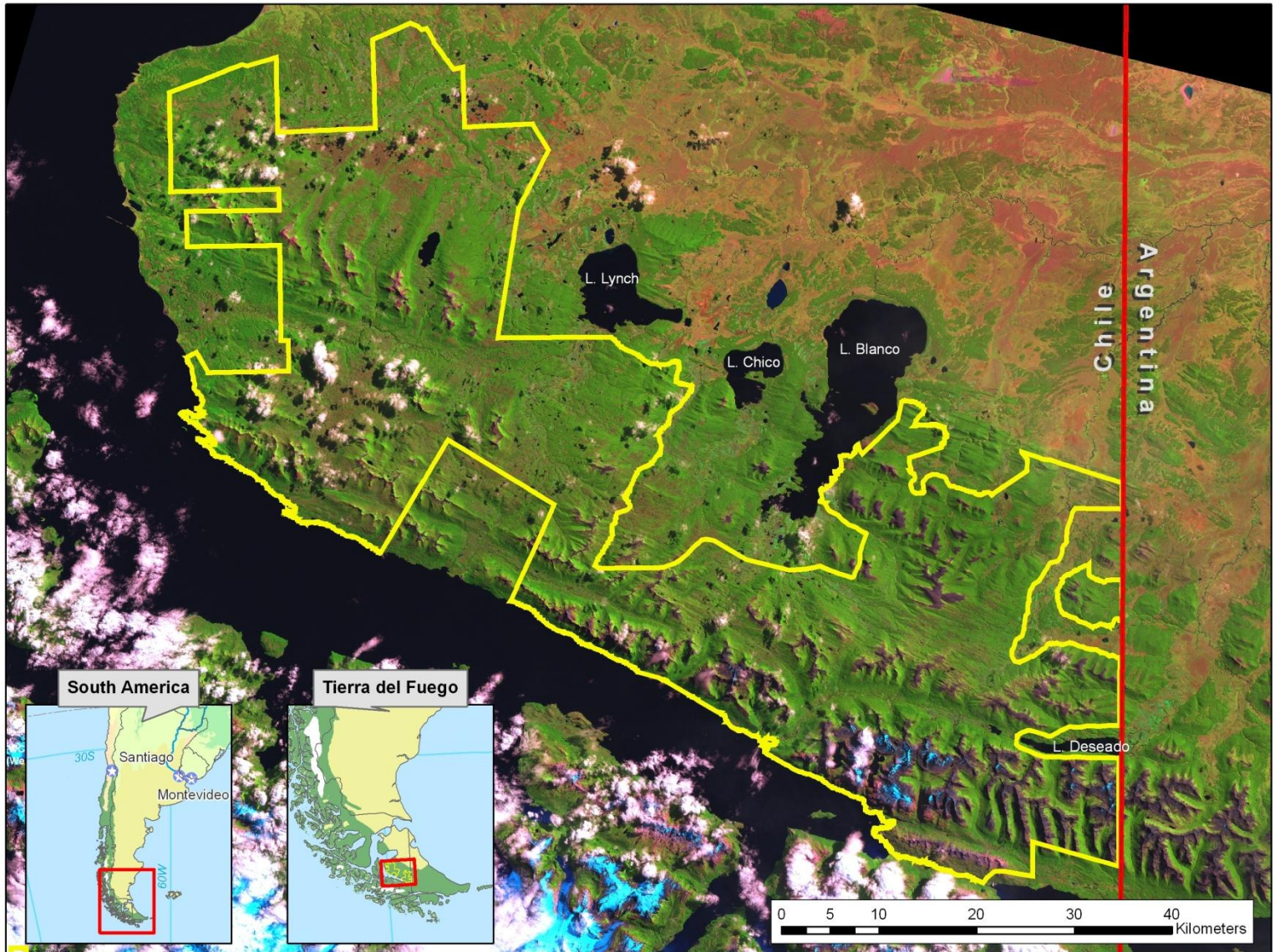
June 22, 2009

Presented by Todd Stevens

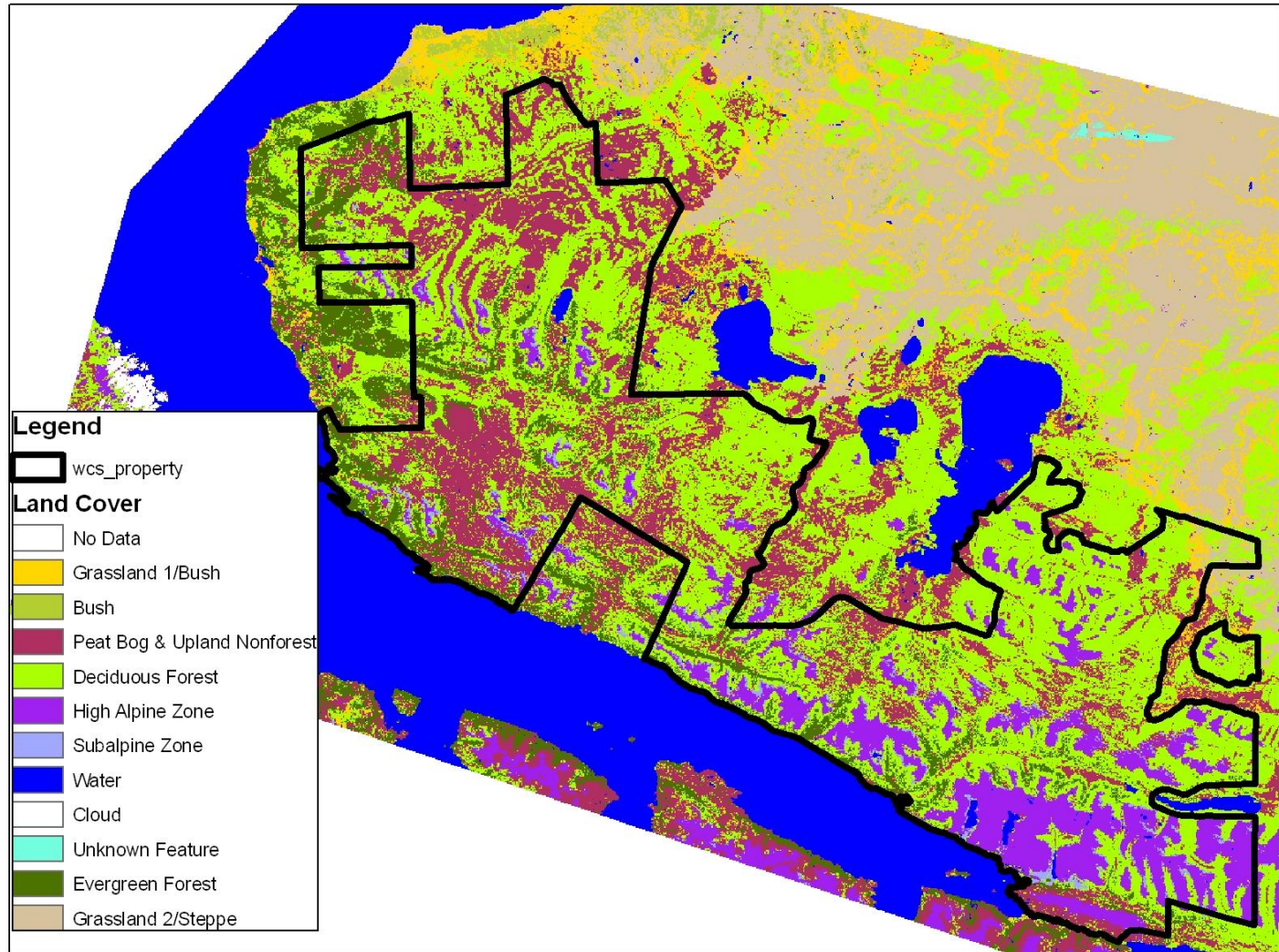
**TransLinks: Promoting Transformation by
Linking Natural Resources,
Economic Growth, and
Good Governance**



Karukinka conservation reserve



75,000 ha. of Peat



Peat



K. Redford / WCS

TRANS LINKS

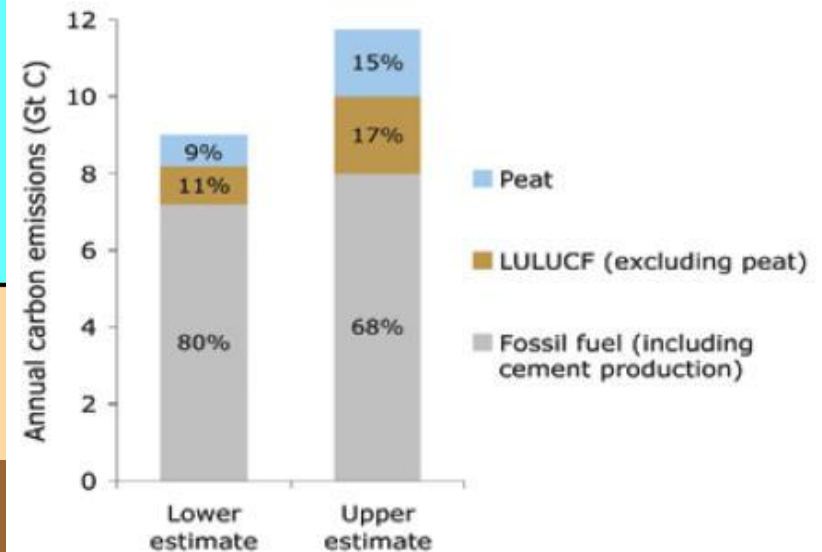
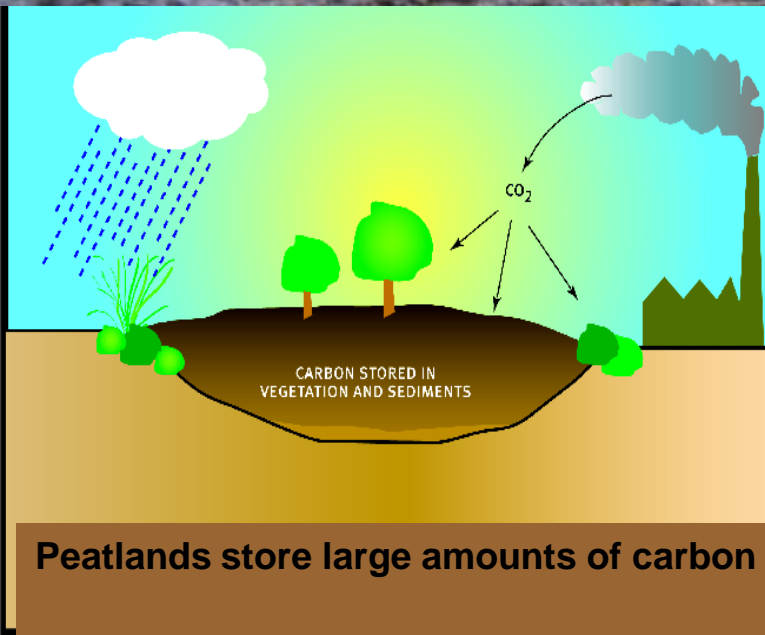
2 to 4 meters deep



K. Redford / WCS

Peat, carbon and climate change

- Globally peatlands store 550 Giga ton (Gt) Carbon
- Equivalent to 30% of terrestrial carbon
 - twice the carbon stored in forest biomass
 - 75% of all carbon in the atmosphere
- Global emissions 2 - 3 Gt CO₂ / yr
 - ~ 30 - 40% of LULUCF



Threat to Karukinka peat



Threat to Karukinka peat



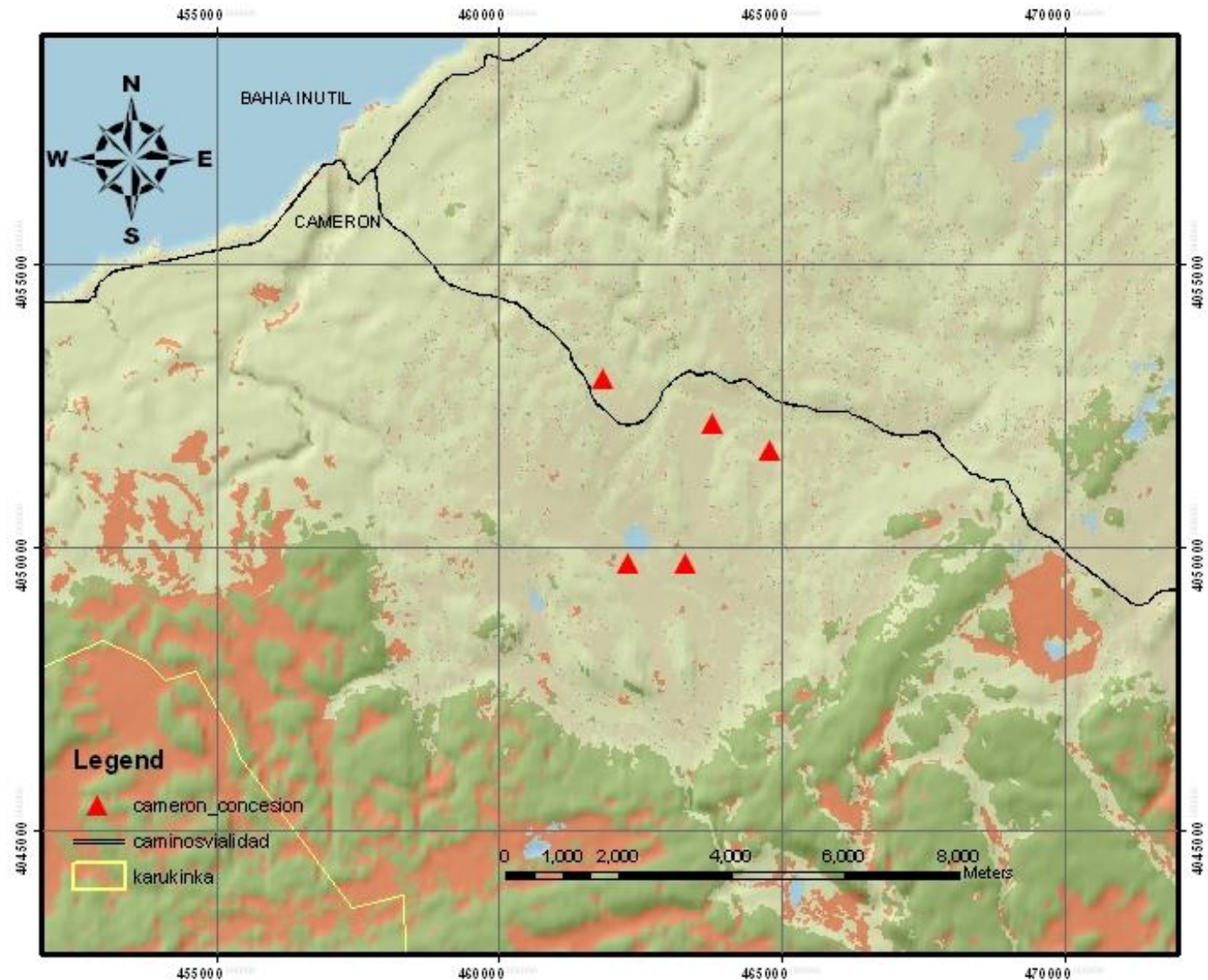
K. Redford / WCS

Threat to Karukinka peat

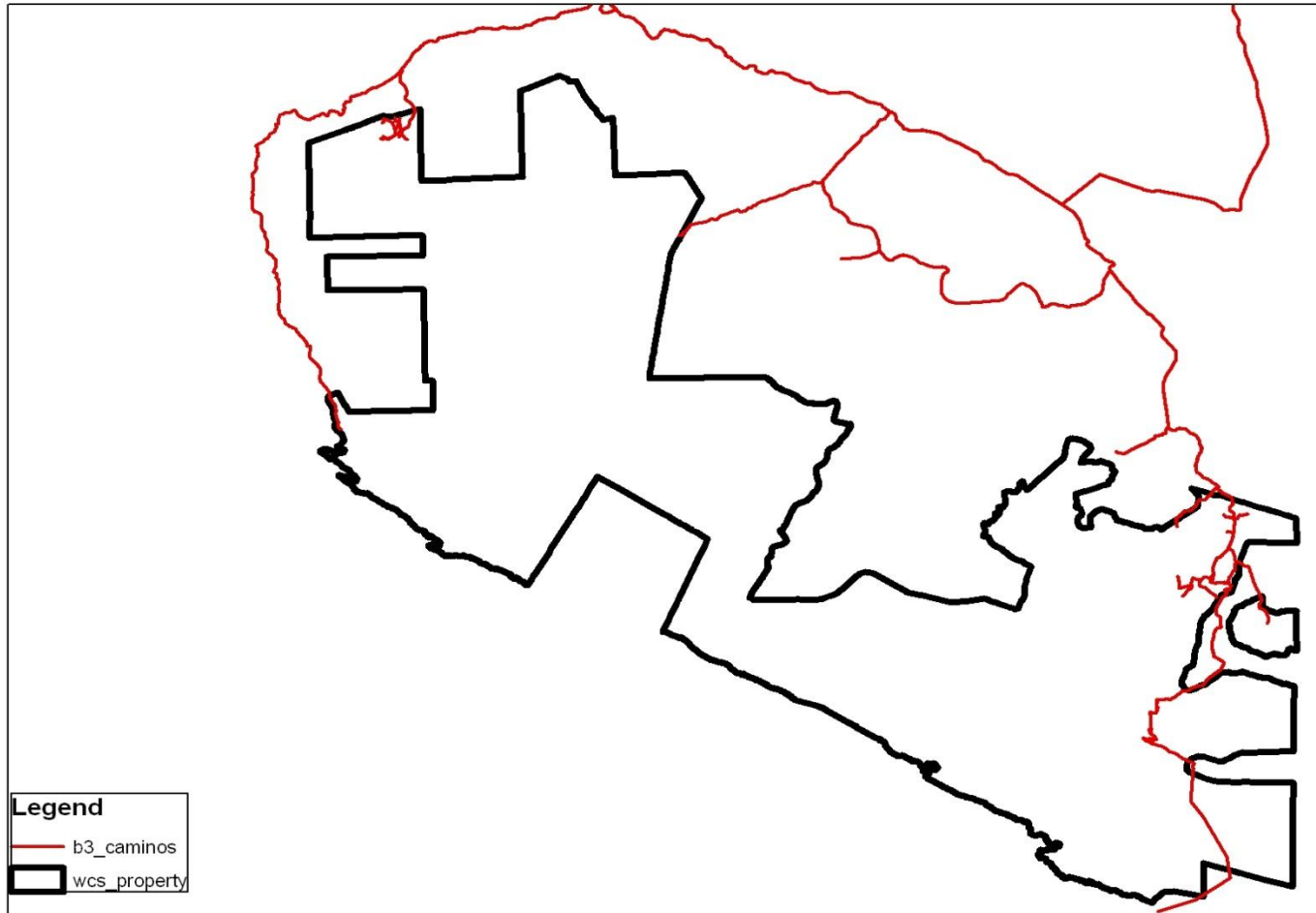


A. Chicchon/ WCS

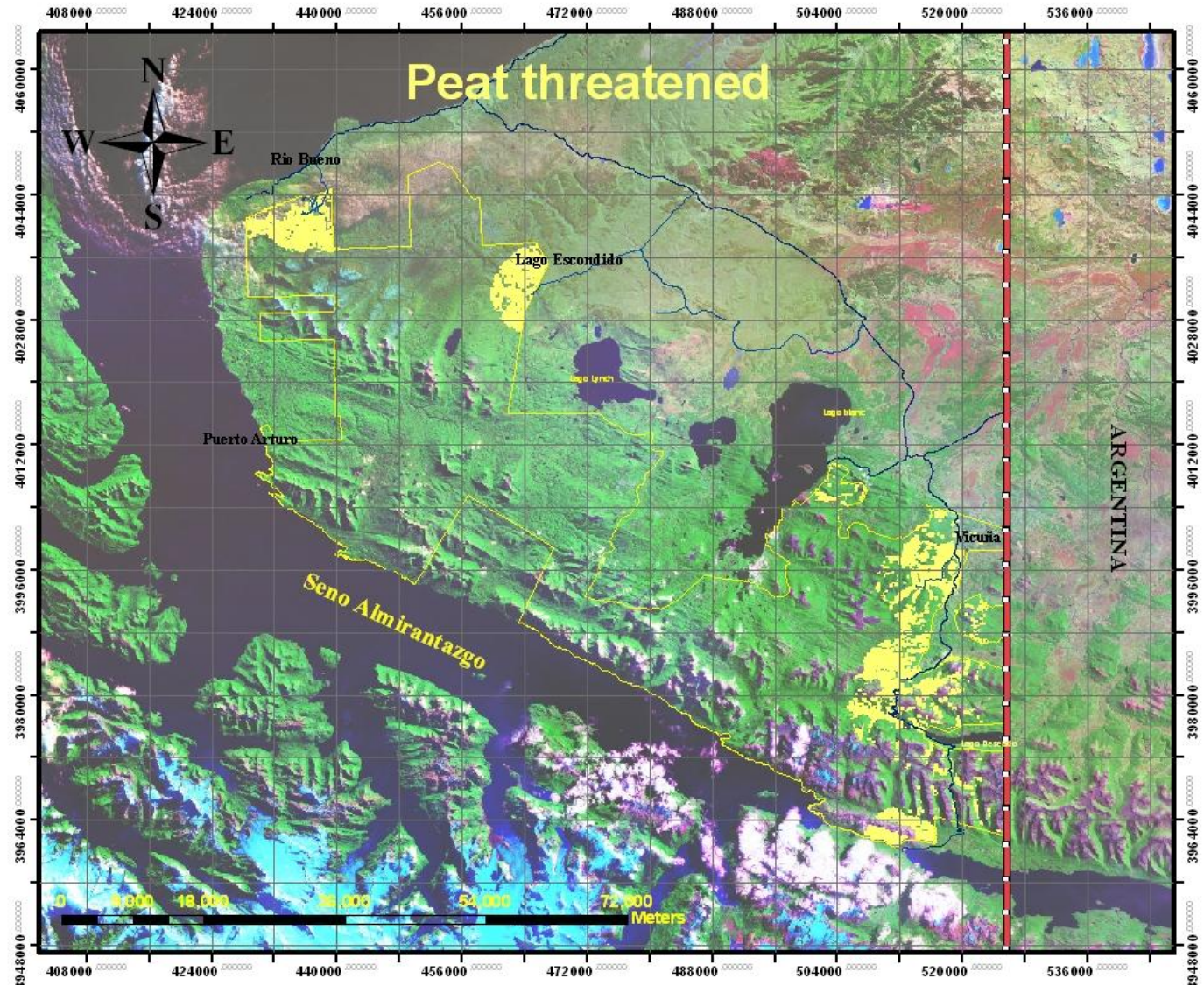
Peat concessions granted near Karukinka



Threat based on proximity to roads



10.8 million tons estimated at risk



Next steps

- Iginio Emmer and VCS peat standard
- Market study by Guillermo Donoso
- Area of scientific interest